

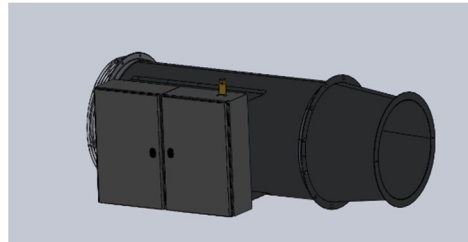


DH MANUAL (01-14-20)

Installation and Service Manual

Direct-Fired Door Heater Units

DH60 & DH90



Total Approximate Weight: 330 lbs.

⚠ WARNING ⚠

Improper installation, adjustment, alteration, service or maintenance can cause property damage, injury or death, and could cause exposure to substances which have been determined by various state agencies to cause cancer, birth defects, or other reproductive harm. Read the installation, operating, and maintenance instructions thoroughly before installing or servicing this equipment.

FOR YOUR SAFETY

The use and storage of gasoline or other flammable vapors and liquids in open containers in the vicinity of this appliance is hazardous.

If You smell Gas:

1. Open windows (indoor installation only).
2. Do not touch electrical switches.
3. Extinguish any open flame.
4. Immediately call your gas supplier.

IMPORTANT

The use of this manual is specifically intended for a qualified installation and service agency. A qualified installation and service agency must perform all installation and service of these appliances.



DH60 is ETL certified to meet the U.S. and Canadian requirements in the latest version of UL STD 508A, CSA STD C22.2 No. 14, CSA STD C22.2 No. 73.

Inspection upon arrival

1. Inspect the unit upon arrival. In case of damage, report it immediately to transportation company and your local AbsolutAire representative.
2. Check the rating plate on the unit to verify the power supply meets available electric power at the point of installation.
3. Inspect the unit upon arrival for conformance with description of product ordered (including specifications where applicable).

THIS MANUAL IS THE PROPERTY OF THE OWNER.
PLEASE BE SURE TO LEAVE IT WITH THE OWNER WHEN YOU LEAVE THE JOB.

SPECIAL PRECAUTIONS

THE INSTALLATION AND MAINTENANCE INSTRUCTIONS IN THIS MANUAL MUST BE FOLLOWED TO PROVIDE SAFE, EFFICIENT AND TROUBLE-FREE OPERATION. IN ADDITION, PARTICULAR CARE MUST BE EXERCISED REGARDING THE SPECIAL PRECAUTIONS LISTED BELOW. FAILURE TO PROPERLY ADDRESS THESE CRITICAL AREAS COULD RESULT IN PROPERTY DAMAGE OR LOSS, PERSONAL INJURY, OR DEATH. THESE INSTRUCTIONS ARE SUBJECT TO ANY MORE RESTRICTIVE LOCAL OR NATIONAL CODES.

HAZARD INTENSITY LEVELS

1. **DANGER:** Indicates an imminently hazardous situation which, if not avoided, WILL result in death or serious injury.
2. **WARNING:** Indicates a potentially hazardous situation which, if not avoided, COULD result in death or serious injury.
3. **CAUTION:** Indicates a potentially hazardous situation which, if not avoided, MAY result in minor or moderate injury.
4. **IMPORTANT:** Indicates a potentially hazardous situation which, if not avoided, MAY result in minor or moderate injury.

DANGER

Appliances must not be installed where they may be exposed to a potentially explosive or flammable atmosphere.

CAUTION

1. Purging of air from gas supply lines should be performed as described in ANSI Z223.1 – latest edition "National Fuel Gas Code", or in Canada in CAN/CGAB149 codes.
2. Since a failure of the unit may affect the proper operation of other fuel burning equipment in the building, the unit shall be electrically interlocked to open balancing air inlet dampers, or other such devices.
3. Do not operate unit with a gas input rate greater than that shown on the unit rating plate.
4. When using a drill bit to clean the burner gas ports, do not distort or enlarge the ports. Do not use a power drill.
5. Ensure the supply voltage to the appliance, as indicated on the serial plate, is not 5% less than the rated voltage.
6. Do not reuse any mechanical or electrical component which has been wet. Such components must be replaced.
7. A DH60 cannot substitute for make-up air. If severe negative pressure exists because of exhaust loads, make-up air must be provided for the DH60 to operate properly.

WARNING

1. Failure to follow proper lifting instructions could result in property damage, serious injury, or death. Lifting should only be done by a qualified rigging company. Use ALL lifting points. Test lift to ensure proper balance and rigging. Never lift in high winds.
2. All field gas supply lines should be pressure/leak tested prior to operation. Never use an open flame. Use a soap solution or equivalent for testing.
3. Gas pressure to the unit controls must never exceed pressure shown on the unit's rating plate. The unit and its

individual shutoff valve(s) must be disconnected from the gas supply during any pressure in excess of 0.5 psig (3.5 kPa).

4. For test pressure less than 0.5 psig (3.5 kPa), the unit gas control must be isolated from the supply gas piping by closing the unit manual shutoff valve(s).
5. For indoor units, where required by Code, use a dedicated line for venting gas to the outside of the building.
6. Disconnect power supply before making wiring connections to prevent electrical shock and equipment damage.
7. If equipped with the factory installed Disconnect Switch option, when the switch is in the "OFF" position, supply power remains energized at the supply power terminal strip and the top of the disconnect switch. When providing service on or near these terminals, building supply power to the unit should be de-energized.
8. All appliances must be wired strictly in accordance with the wiring diagram furnished with the unit. Any wiring that is different from the wiring diagram could result in a hazard to persons and property.
9. Any original factory wiring that requires replacement must be replaced with wiring material having a temperature rating of at least 105°C.
10. Ensure the supply voltage to the appliance, as indicated on the serial plate, is not 5% greater than the rated voltage.
11. When servicing or repairing this equipment, use only factory-approved service replacement parts. A complete replacement parts list may be obtained by contacting AbsolutAire, Inc. Refer to the rating plate on the unit for complete appliance model number, serial number, and company address. Any substitution of parts or controls not approved by the factory will be at owner's risk.
12. Spark testing or shorting of control wires by any means will render the control transformer inoperative. **DO NOT** allow this to happen as it **IS NOT** covered under the warranty.

IMPORTANT

Start-up and adjustment procedures should be performed by a qualified service agency.
To check most of the Possible Remedies in the troubleshooting guide (pgs. 13-14), refer to the applicable sections of the manual.

Installation in an airplane hangar must be in accordance with the Standard for Aircraft Hangars, ANSI/ NFPA 409, and (2) public garage in accordance with the Standard for Parking Structures, ANSI/NFPA 88A, or the Standard for Repair Garages, ANSI/NFPA 88B and with CAN/CGA B149 Installation Codes.

Adequate building relief must be provided so as to not over-pressurize the building when the heating system is operating at its rated capacity. This can be accomplished by taking into account, through standard engineering methods, the building structure design infiltration rate; by providing proper sized relief openings; by interlocking a power exhaust system; or by a combination of these methods.

The heater inlet shall be located in accordance with the applicable code provisions for ventilation air.
Field constructed intake accessories should be properly designed and installed to minimize the entry of snow and rain. All air to the unit must be ducted directly from the outdoors. Recirculation of room air is not permitted through the burner. If in doubt regarding the application, contact your local AbsolutAire Representative.

TABLE OF CONTENTS

Unit Mounting	4
Unit Installation	5
Prior Start-Up/Operation	6
Unit Features	7-9
Unit Features - Control Cabinet	7-8
Unit Features - Blower Cabinet	8
Accessories - Field Installed - Remote Panel/Other	9
Start-Up Procedure	10-12
Before Performing the Start-Up	10
Pre-Start-Up Inspection	10
Performing the Start-Up	10-11
Commissioning/Sequence of Operation	11-12
Final Step	12
Maintenance	12-13
Service and Troubleshooting	13-14
Start-up Checklist and Report	15-20
Warranty	21

MOUNTING OPTIONS

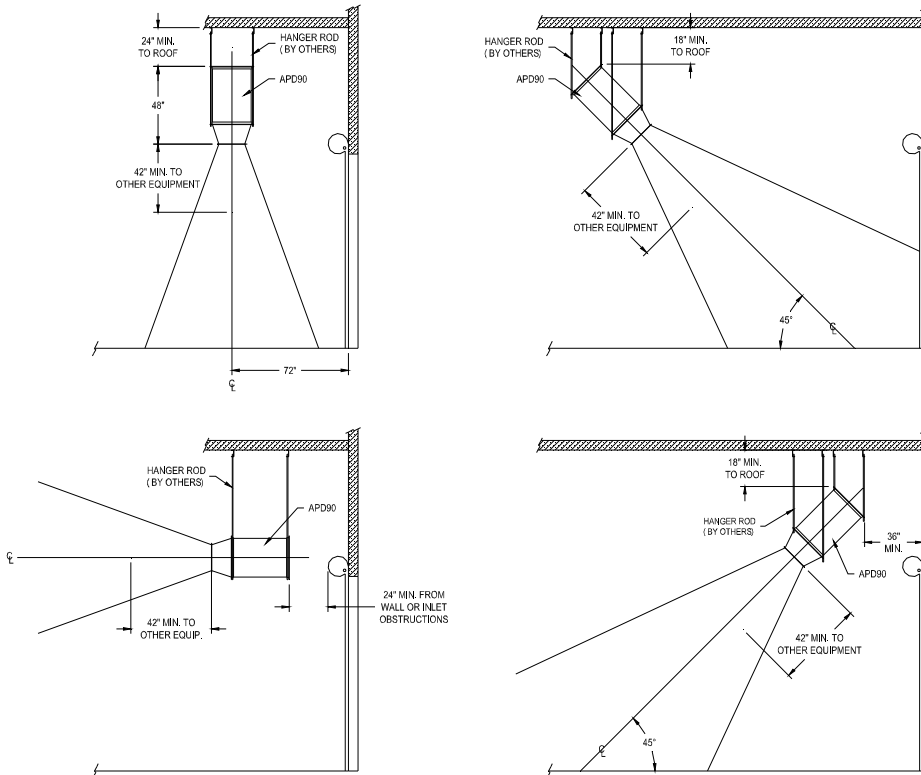
WARNING

Failure to follow proper lifting instructions could result in property damage, serious injury, or death. Lifting should only be done by a qualified rigging company. Use ALL lifting points. Test lift to ensure proper balance and rigging. Never lift in high winds.

Unit Installation

Prior to installing the unit in the final location, review the following:

1. Follow site preparation instructions for suspended mounting recommendations.
2. Check the rating plate of the unit before lifting to ensure that the model number shown matches that shown on the plans. Although the unit may look similar, their function, capacities, options, and accessories may vary widely.
3. Check the unit dimensions for proper fit.
4. Hanger rods & channel iron, adequate to support the weight of the unit, will be required.
5. Attach the hanger rods to the building structure so they hang down and attach to the angle rings on the door heater. Make sure the rod locations don't interfere with gas train or electrical control panel access. If desired, provide one suspension type vibration isolator in each hanger rod. The minimum combined ratings of the vibration isolators and suspension materials should equal 150% of the total weight of the fully assembled unit.
6. Move the unit to its installation location.
7. Fully assemble the unit with all included components.
8. Raise the unit so that the hanger rods drop through the hole(s) in the angle extension.
9. Attach two nuts to each hanger rod and jamb the two nuts together to prevent loosening.



UNIT INSTALLATION

Gas Connections

WARNING

1. All field gas supply lines should be pressure/leak tested prior to operation. Never use an open flame. Use a soap solution or equivalent for testing.
2. Gas pressure to the unit controls must never exceed the pressure shown on the unit rating plate. The unit and its individual shutoff valve(s) must be disconnected from the gas supply during any test pressure in excess of 0.5 psig (3.5 kPa).
3. For test pressure less than 0.5 psig (3.5 kPa), the unit gas control must be isolated from the supply gas piping by closing the unit manual shutoff valve(s).
4. For an indoor unit, where required by Code, use a dedicated line for venting gas to the outside of the building.

CAUTION

Purging of air from gas supply lines should be performed as described in ANSI Z223.1-latest edition "National Fuel Gas Code" or in Canada in Can/CGA-B149 codes.

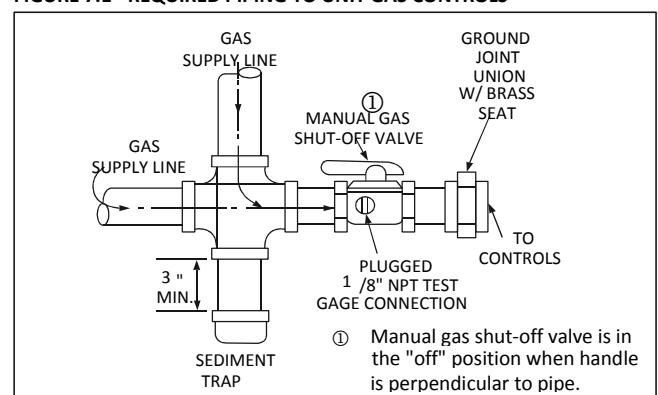
1. Installation of piping must be in accordance with local codes, and ANSI Z223.1-latest edition, "National Fuel Gas Codes". (In Canada CAN/CGA-B149 Code).
2. Piping to the unit must conform to local and national requirements for type and volume of gas handled, and pressure drop allowed in the line. Refer to the unit rating plate to determine the Btu capacity of the unit and the type of gas the unit is designed to use. Using this information, refer to the ASHRAE Guide Fundamentals Handbook, or other gas pipe sizing guides, to determine the correct supply pipe size. Allow sufficient pipe size based on allowable pressure drop in supply line. Where several units are served by the same main, the total capacity of all the units served by the main must be used. Do not use pipe sizes smaller than 1/2".
3. Pipe size to the unit must match the factory side access gas connection size, 1" NPT.
4. Install a ground joint union with brass seat and a manual shut-off valve external to the unit casing, as shown in Figure 7.1, adjacent to the unit for emergency shut-off and easy servicing of controls. Include a 1/8" NPT plugged tapping accessible for test gauge connections.
5. Provide a sediment trap, as shown in Figure 7.1 before each unit and where low spots in the pipe line cannot be avoided.
6. This unit requires a constant minimum gas supply pressure, 6.5" wc, when the unit is operating at maximum gas flow. If the gas supply pressure exceeds 1 psig, a gas pressure regulator must be installed before the unit to prevent damage to the internal valve components. If the pressure is lower than 6.5" wc, the heater may not perform to specifications.
7. Support piping so that no strains are imposed on the unit controls when connected.
8. Blow out the gas line to remove debris before making connections.

9. Purge the gas line to remove air before attempting to start unit. Purging of air from gas lines should be performed as described in ANSI Z223.1-latest edition "National Fuel Gas Code", or in Canada in CAN/CGA-B149.

10. All field gas piping must be pressure/leak tested prior to unit operation. Use a non-corrosive bubble forming solution or equivalent for leak testing. The heater and its individual shut-off valve must be disconnected from the gas supply piping system during any pressure testing of that system at test pressures in excess of 0.5 psig. The heater must be isolated from the gas supply piping system by closing its individual manual shutoff valve during any pressure testing of the gas supply piping system at test pressures equal to or less than 0.5 psig.

11. Weatherize all utility clearance holes on the unit after connections have been made.

FIGURE 7.1 - REQUIRED PIPING TO UNIT GAS CONTROLS



INSTALLATION / PRIOR TO START-UP / OPERATION

Electrical Connections

WARNING

1. Disconnect power supply before making wiring connections to prevent electrical shock and equipment damage.
2. If equipped with the factory installed disconnect switch option, when the switch is in the "OFF" position, supply power remains energized at the supply power terminal strip and the top of the disconnect switch. When providing service on or near these terminals, building supply power to the unit should be de-energized.
3. All appliances must be wired strictly in accordance with the wiring diagram furnished with the unit. Any wiring that is different from the wiring diagram could result in a hazard to persons and property.
4. Any original factory wiring that requires replacement must be replaced with wiring material having a temperature rating of at least 105°C.

CAUTION

Ensure that the supply voltage to the appliance, as indicated on the serial plate, is not 5% less than the rated voltage.

1. Installation of wiring must conform with local building codes, or in the absence of local codes, with the National Electric Code ANSI/NFPA 70 - Latest Edition. Unit must be electrically grounded in conformance to this code. In Canada, wiring must comply with CSA C22.1, Part 1, Electrical Code.

2. Job specific wiring diagrams are furnished with each unit. A permanent laminated diagram is located on the inside of the electric control cabinet door. The unit is supplied with a labeled terminal strip for ease of wiring. Refer to this diagram for all wiring connections.

3. Make sure all multi-voltage components (motors, transformers, etc.) are wired in accordance with the power supply voltage.

4. The power supply to the unit must be protected with a lockable fused or circuit breaker disconnect switch. If a disconnect switch is not supplied with the unit, the field-supplied disconnect must have adequate ampacity and must be installed in accordance with Article 430 of the National Electric Code, ANSI/NFPA 70.

5. The power supply must be within 5% percent of the voltage rating and each phase must be balanced within 2% of each other. If not, advise the utility company.

6. The factory supplied door switch must be installed so that the unit energizes and de-energizes as part of the process.

7. External electrical connections to be installed include:

- Supply power connection (115, 208, 230, 380, 460, or 575 volts).
- Connection of thermostats & remote monitoring panels that may be supplied (115 and/or 24 volts - refer to unit wiring diagram).
- Connection of door switch (shipped loose)

Prior To Start-Up / Operation

Each unit is supplied with this Installation and Service Manual, which includes a Field Start-Up Form, starting on page 29. The

Field Start-Up Form must be followed and properly filled out by the installer, with one copy kept with the unit.

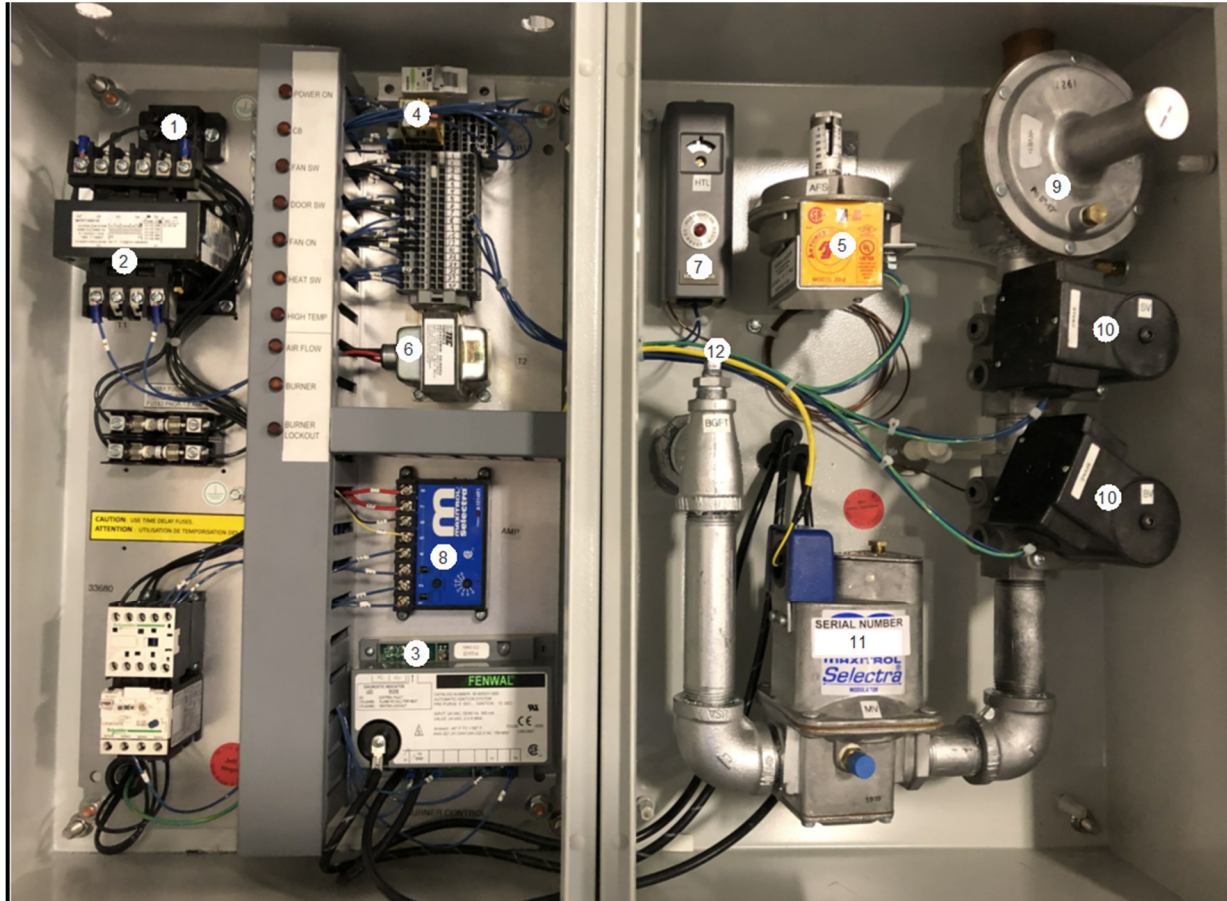
Before continuing with the start-up and checkout procedure, it is important to familiarize yourself with the controls and features of the unit. Review the following:

- Documents shipped with the unit to determine which options/controls are included.
- Pages 9 through 17 provide photographs, locations, and descriptions for unit features, options, accessories, and controls.

Once a thorough review of these controls and devices has been made, the step-by-step Start-Up Procedure as described on pages 18 through 23 must be performed.

UNIT FEATURES - CONTROL CABINET

FIGURE 9.1 - FEATURE AND FACTORY MOUNTED OPTION LOCATIONS



The following refer to Figure 9.1. These items are described in greater detail on the following pages.

1. Non-Fused Disconnect Switch
2. Control Power Transformer
3. Flame Safeguard Control
4. Control Relays
5. Air Flow Proving Switch
6. 24V Isolation Transformer

7. High Temperature Limit Thermostat
8. Temperature Control Amplifier
9. Regulating Valve
10. Main Gas Valve
11. Modulating Gas Valve
12. Gas Pressure Test Port

The following details the standard and factory installed options available as shown in Figure 9.1.

WARNING

If equipped with the factory installed disconnect switch option, when the switch is in the "OFF" position, supply power remains energized at the supply power terminal strip and the top of the disconnect switch. When providing service on or near these terminals, building supply power to the unit should be de-energized

1. Non-Fused or Fused Disconnect Switch

Factory installed on the stationary panel next to the door, the switch provides a convenient method of turning off power to the unit. When in the "OFF" position, power is disconnected to all unit wiring electrically following the switch but remains energized before the switch (See Warning).

2. Control Power Transformer and Fuses

All units include a transformer used to reduce the supply voltage to the voltage required for the unit controls.

3. Flame Safeguard Control

The flame safeguard control monitors safety devices to determine if the gas ignition sequence should be initiated. Once initiated, the control will also monitor a flame rod flame sensor to verify burner flame. The control includes a pre-purge timer to clear any residual gas in the unit before ignition can be initiated.

4. Control Relay

Includes double-pole, double throw (DPDT) contacts for sequence of operation control switching.

5. Air Flow Proving Switch

The switch monitors the pressure drop across the burner to ensure that sufficient air flow exists before allowing the burner to operate. The switch is electrically interlocked with the flame safeguard control (#6).

6. 24v Isolation Transformer

A 24V to 24V transformer is used to electrically isolate sensitive controls from the rest of the control circuit.

7. High Temp Limit Thermostat

The high temperature limit control prevents the burner from firing if excessive heated air temperatures are experienced. The limit control is mounted on the blower housing and is electrically interlocked with the flame safeguard control (#6). The switch requires a manual reset if tripped.

8. Temperature Control Amplifier or Signal Conditioner

The amplifier converts the temperature control signal from the discharge air temperature sensor.

9. Regulating Valve

All

10. Main Gas Valve

All units are supplied with redundant automatic main gas shut-off valves to control gas flow to the modulating gas valve (#21). These valves may be a combination gas valve as shown, which have two valve seats in one valve body or two separate gas valves on higher MBH capacity models.

11. Modulating Gas Valve

The modulating gas valve is controlled by the temperature control amplifier or signal conditioner (#19) to vary the flow of gas to the burner.

12. Burner Gas Pressure Tap

Used during startup to easily connect a manometer to measure profile pressure drop during unit balancing.

Inlet Gas Pressure Gauge (not shown)

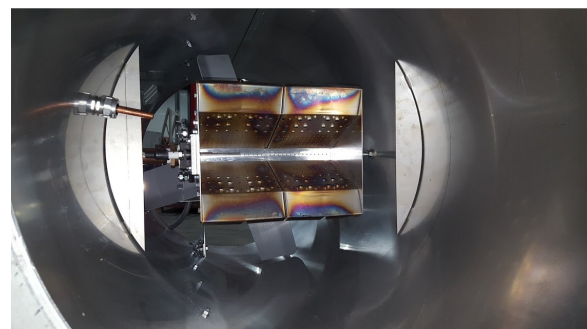
The inlet gas pressure gauge provides a method to easily determine if the gas pressure entering the unit is within the range required, without having to connect a manometer.

UNIT FEATURES



1. Direct-Drive Axial Fan with Inlet Guard

2. Blower Motor



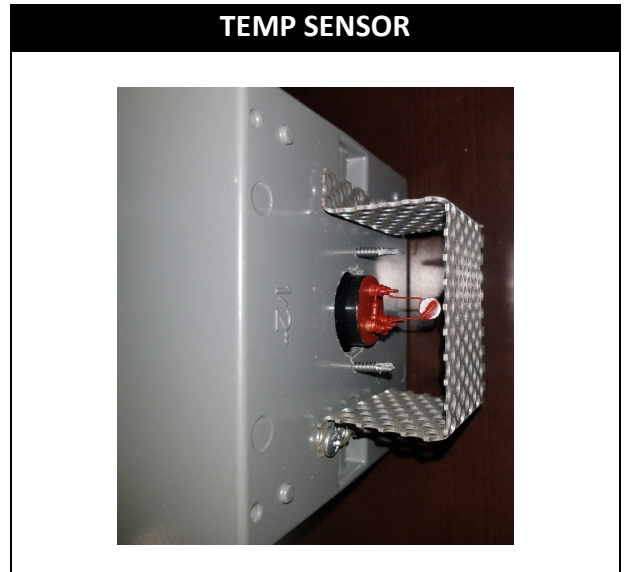
3. Direct Fired Burner

12. High Temp Limit Thermostat

The high temperature limit control prevents the burner from firing if excessive heated air temperatures are experienced. The limit control is mounted on the blower housing and is electrically interlocked with the flame safeguard control (#6). The switch requires a manual reset if tripped.

ACCESSORIES - FIELD INSTALLED

FIGURE 16.1 - TYPICAL REMOTE MONITORING (MAXITROL 14 SHOWN)



The following refer to Figure 16.1. These items are described in greater detail on this page.

Remote Monitoring Panel

The remote monitoring panel is used to control the operation of the door heater

Remote monitoring panel features include:

3. Fan Switch

All panels include a Fan On/Off switch.

3. Burner Switch

All panels include a Burner On/Off switch.

4. Temperature Control

- **Discharge Temp Setpoint Dial:** Maxitrol 14 units

START-UP PROCEDURE

WARNING

1. If equipped with a factory installed disconnect switch, when the switch is in the "OFF" position, supply power remains energized at the supply power terminal strip and the top of the disconnect switch. When providing field service on or near these terminals, building supply power to the unit should be de-energized.
2. Proper air velocity over the burner is critical. If the velocity is not within the unit specifications, the unit will not operate efficiently, may have nuisance shutdowns, and may produce excessive carbon monoxide (CO) or other gases.

CAUTION

1. Do not operate unit with a gas input rate greater than that shown on the unit's rating plate.
2. Purging of air from gas supply lines should be performed as described in ANSI Z223.1 - latest edition "National Fuel Gas Code", or in Canada in CAN/CGA-B149 codes.

IMPORTANT

Start-up and adjustment procedures should be performed by a qualified service technician.

Before Performing the Start-Up

Before performing the start-up, review "UNIT INSTALLATION" procedures in this manual. To properly perform the start-up, the following instruments are required.

- Ohm Meter
- Gas Pressure Gauge (range dependent on inlet pressure to unit)
- Slack Tube Manometer, or 0-30" wc Pressure Gauge
- Inclined Manometer (0-5" wc)
- Hand Held Tachometer (contact, reflective, or strobe type)

Pre-Start-Up Inspection

Although this unit has been assembled and tested at the factory, the following pre-operational procedures must be performed to assure the unit is ready for operation.

1. Before proceeding, turn off all power to the unit. Turn all manual hand gas valves to the closed position.
 - Remove all shipping straps, braces and tie downs.
 - Perform a visual inspection of the unit to make sure no damage has occurred during shipment or installation.
 - Check burner and fan wheel to insure it is secure.
 - Check all electrical connections for tightness.
 - Check to ensure there are no obstructions to the inlet air supply or the discharge air supply.
 - Check gas piping for leaks using a soap/water solution.
2. After these preliminary checks have been made, the unit can be prepared for start-up.

Performing the Start-Up

After the unit has been installed and the preliminary checks have been made from the previous section, the following start-up can be performed.

1. Turn off all power to the unit. Turn all hand gas valves to the closed position.

2. Set the Burner On/Off & Fan On/Off switches on the remote control panel to the "Off" position, and set all thermostats to their lowest settings.

3. Make sure all service doors are installed and/or closed.

4. With the Fan On/Off switch still in the "Off" position, turn on the electrical supply to the unit.

5. Move the Fan On/Off switch to the "On" position (to activate the unit with heat disabled).

6. Check the blower for proper rotation per the airflow arrow on the blower.

7. Check the motor voltage. For three phase systems check to make sure the voltage on all 3 legs vary less than 2%.

8. Check the motor Amp draw to be sure it does not exceed the motor nameplate FLA rating.

9. Measure the unit air volume being delivered and compare to the rated air volume on the unit serial plate. The most accurate way to measure the air volume is by using a pitot traverse method downstream of the blower. Other methods can be used but should be proven and accurate.

10. Recheck the gas supply pressure by installing a gas pressure gauge connected to the inlet gas pressure test port indicated on the piping diagram included with the unit.

If the unit has an inlet gas pressure gauge, the pressure can be read directly from the gauge without needing to connect a separate gauge. Refer to rating plate for proper gas supply pressure to unit. If inlet gas pressure exceeds the maximum pressure specified on the rating plate, a gas pressure regulator needs to be added upstream of the factory furnished and piped components.

Refer to the heater rating plate for determining the minimum gas supply pressure to obtain the full heating capacity for which this heater is specified.

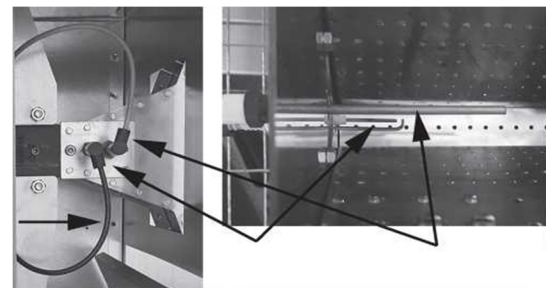
11. The unit includes Direct Spark Ignition (no pilot line), check the flame rod flame sensor signal with the following steps.

- a. Check that all manual reset safety devices have been reset to their normal operating position.

- b. Set the Burner On/Off switch to "On" and set the temperature controls to call for heat.

- d. The spark ignitor should begin to spark in approximately 10 seconds, and the burner flame should be established within 10 seconds.

FIGURE 19.1 - DIRECT SPARK IGNITION COMPONENTS
SIDE VIEW INTO AIRFLOW VIEW



12. Check the pressure differential across the burner profile per the following:

- a. Remove the tubing plug from the burner gas pressure tap labeled "BGPT" and connect an inclined manometer.
 - b. If the outdoor air temperature is below 60°F, fire the main burner to achieve a discharge air temperature of approximately 70°F. If the burner does not fire under these conditions, refer to the Service and Troubleshooting section of this manual for additional guidance. If the outdoor temperature is 60°F or greater, do not fire the main burner.
 - c. Read the pressure differential reading on the burner pressure gauge or manometer. The actual installed pressure differential reading must be 0.55" wc +/- 0.05" wc, or 0.50" wc to 0.60" wc.
 - d. If the differential pressure is out of range and cannot be achieved, contact the factory for additional guidance.
 - e. When the correct burner velocity pressure differential is verified, turn the unit off and open the main disconnect switch. Remove the manometer and replace the tubing plugs in the burner gas pressure tap.
17. The high fire manifold (burner) pressure must be checked to ensure it matches the pressure shown on the unit serial plate. Over-firing from high pressure can result in poor combustion and undesirable levels of combustion byproducts being introduced to the heated space. The procedure is outlined in the following steps.
- a. With the unit off, close the main gas manual hand valve. If not equipped with a burner gas pressure gauge, remove the 1/8" pipe plug test port at the burner and attach a water manometer or "U" tube that is at least 12" high. See piping diagram furnished with the unit for pressure tap locations.
 - b. Start the unit and record the burner suction pressure present at the test port and record the negative number. Next, open the gas valve and allow the burner to ignite (resetting the burner lockout if necessary). Observe the flame during the 10 second at low fire start to make sure it lights across the entire length of the burner and is stable with a clean blue flame.
 - c. Add the high fire pressure listed on the rating plate to the negative burner suction pressure recorded above. The resulting sum is the actual measured gas pressure required for high fire in the next step.
 - d. Initiate a short (10-second) period of high fire. High fire can be achieved by removing wire 29 from terminal 4 on the Maxitrol amplifier.
- If the actual measured pressure is within (+/-) 0.50" wc of the calculated burner pressure above, adjust the gas valve regulator until the measured pressure matches the calculated pressure. If the actual measured pressure is greater than 0.50" wc from the calculated burner pressure above, check the inlet gas pressure to the unit. Adjust the main gas valve regulator to the correct inlet pressure within the range indicated on the unit rating plate. Once corrected, repeat step #17 to measure the burner pressure.
- e. With the high fire manifold pressure set to match the setting on the unit serial plate, observe the flame while in high fire. The flame should be stable and burning clean. The flame should be predominantly blue, although a slight orange tip may be present and is acceptable.
 - f. After the high fire pressure is correctly set, check the low fire burner flame. Install the wires removed in "d" above. Low fire can be achieved by removing CR12 from its relay base.

- g. Recycle the ignition sequence to make sure the burner lights smoothly and the flame is present across the entire length of the burner.
18. With the unit off, close the main gas manual hand valve. If applicable, remove the "U" tube manometer and replace the 1/8" pipe plug test port at the burner.
19. Test the gas seal of the safety shut off valve(s) with the following steps:
- a. While the unit is off, close the main gas hand valve and attach a pressure gauge to the downstream side of the last safety shut off valve (SSOV) closest to burner.
 - b. Open the main gas hand valve and following the startup procedure described in this manual, turn the unit on and allow the burner to go to main flame.
 - c. Shut the unit off and let the pressure drop to zero.
 - d. Close the manual gas hand valve closest to the burner and wait 5 minutes. The main gas manual hand valve should remain open.
 - e. There should be no changes in pressure. If the pressure increases, the second SSOV needs to be replaced.
 - f. Open the main gas manual hand valve.

Commissioning

After all of the initial start-up procedures have been performed, the unit is ready for commissioning. Check the unit operation in all modes against the General Sequence of Operation on the following pages, or refer to the job specific sequence of operation included with the unit as shipped.

Sequence of Operation - General

The following describes the general sequence of operation for the unit, however each unit may be slightly different based on unit configuration and application. Each unit includes a laminated job specific Sequence of Operation affixed to the inside of the control access door. Refer to that document for the actual unit Sequence of Operation.

Fan On/Off Switch = "Off"

The unit is shut down with no blower operation.

Fan On/Off Switch = "On"

1. With the blower motor control circuit energized, the motor starter contacts will close.
2. The gas and temperature controls are locked out to prevent heating during the Fan "On" mode of operation.

Burner On/Off Switch = "Off"

The unit is shut down with no burner operation.

Burner On/Off Switch = "On"

1. Before the ignition control sequence can be initiated, the following safety devices are checked for closure:
 - a. The air flow pressure switch ensures the air flow is at or below the maximum allowable to ensure clean combustion and reduced flame disturbance.
 - b. The high temperature limit control ensures the supply air temperature does not exceed the maximum allowable limit for safe operation.
4. With the safety devices described in the above steps verified, the flame safeguard control is enabled to initiate the ignition sequence. After 10 seconds of pre-purge time, the ignitor is energized to produce spark ignition as follows:

- The main valve(s) opens and with the modulating valve at minimum position, the burner is allowed to light (direct spark ignition).
5. The burner remains on low fire momentarily, then the temperature controls take over and fire the burner based on load demands.
6. If any of the devices discussed in step #3 open, the gas circuit is disabled, the unit goes into lockout, and the burner lockout light is lit. Before resetting, a service person must inspect the unit, determine the cause, and take corrective action.

Sequence of Operation - Blower

The blower control circuit is configured from the factory as initiated, the motor starter contacts will close and the blower motor will operate at rated speed. The speed is fixed and not adjustable.

Final Step

With Start-Up and Commissioning complete, set the temperature controls for automatic operation if the unit is to be put into service immediately.

If the unit is to be left off, set the On/Off switch to the "Off" position and turn the power off at the unit disconnect switch.

MAINTENANCE

WARNING
<ol style="list-style-type: none"> 1. Disconnect power supply before maintaining the equipment to prevent electrical shock and equipment damage. 2. If equipped with the factory installed disconnect switch option, when the switch is in the "OFF" position, supply power remains energized at the supply power terminal strip and the top of the disconnect switch. When providing service on or near these terminals, building supply power to the unit should be de-energized.
CAUTION
When using a drill bit to clean the burner gas ports, do not distort or enlarge the ports. Use a pin vise not a power drill.
IMPORTANT
Service and maintenance procedures should be performed by a qualified service agency.

All heating equipment should be serviced before each heating season to assure proper operation. The following items may be required to have a more frequent service schedule based on the environment in which the unit is installed, and how long the equipment is operated.

Motor Assembly

Check the motor sheave set-screws and the motor slide base bolts for tightness upon initial start-up and before each heating season. The motor bearings are pre-lubricated at the factory for initial operation but should be re-lubricated (when provided with grease fittings) at six (6) month intervals. The recommended lubricants are Shell Oil Company "Dolium R", Chevron Oil "SRI No. 2", or Texaco "Premium RB" lubricant. When lubricating, consider the following:

- Clean the grease fitting and then apply the grease with a proper grease gun. Keep grease clean.
- Use two full strokes for each bearing. Do not over-lubricate.
- Do not mix petroleum grease with silicone.
- Lubricate motors at standstill.

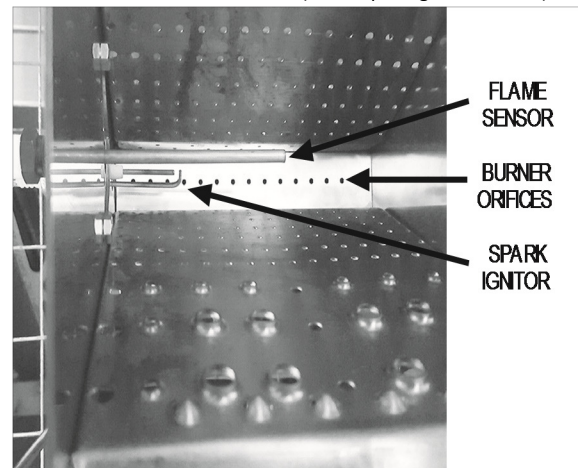
Burner

Annually, prior to each heating season, a check should be made of the burner and components. Clean the igniter and flame rod and examine porcelain for cracks. Perform the following:

1. Inspect the burner carefully, including upstream and downstream sides of mixing plates as well as burner body face. Any accumulation of scale or foreign material on either side of the mixing plates should be removed with a wire brush.
2. Add fresh di-electric grease (Grainger p/n 23YC40) inside the flame rod boot.
3. Check visually that no holes in the mixing plates are blocked. If any mixing plates are loose or missing fasteners, tighten/replace as necessary. Always use zinc plated or stainless fasteners.
4. Check burner orifices for carbon build-up and clean. Use a pin vise with a #43 drill bit for Maxon NP-I burner orifices.

DO NOT ENLARGE BURNER ORIFICES - THIS MAY AFFECT PERFORMANCE

FIGURE 25.1 - BURNER ORIFICES (direct spark ignition shown)



Gas Train

An annual inspection of the gas control assembly should be made. Internal and external piping should be checked for leaks. Relief vents on gas controls should be checked for clogging.

Air Pressure Switches

An annual check of the tube for the air flow switch, and the entering and leaving side of building pressure switches, should be made to ensure against blockage.

Discharge Air Sensor

Remove the cover from the sensor assembly junction box (Item #7 in Figure 12.1) which will expose the sensor module (Figure 26.1). Remove the two screws that hold the sensor module in the

junction box. The sensor assembly junction box does not get removed. Insert a bottle brush into the sensor sampling tube to clean out any dust or dirt, then replace the sensor module and junction box cover.

Gas and electric controls

Inspect for general cleanliness and tightness of electric and mechanical connections.
 Put the system back into operation and view the burner from the downstream side while cycling the burner through its full firing range. A good flame will be blue, with minimal yellow "fingers". The flame length in forced "high fire" should be 12-18" long.

Procedure for extended shutdown Periods

If the unit is to be shut down for an extended period of time, the following precautions should be followed:

1. Turn off all manual shutoff valve(s) in the gas train of the unit, and in the gas supply line to the unit.
2. Turn off the electric supply to the unit at the unit disconnect. Lock the disconnect to prevent tampering.
3. If the unit is supplied with filters, remove and store the filters.
4. Protect outside air openings to prevent the unit from being soiled.

SERVICE AND TROUBLESHOOTING

WARNING		CAUTION	
When servicing or repairing this equipment, use only factory-approved components.	Do not use any mechanical or electrical component which has been		
A. Power Failure	1. Disconnect not turned on.	1. Turn to disconnect.	ide
	2. Blown fuses.	2. Check and replace.	
	3. Main to unit disconnect not on.	3. Turn on power at main.	
B. Dampers Not Operating	1. Disconnect not turned on.	1. Turn to disconnect.	ide
	2. Blown fuses.	2. Check and replace.	
	3. Main to unit disconnect not on.	3. Turn on power at main.	
	4. Failed damper motor.	4. Check and/or replace.	
	5. Loose wiring to motor.	5. Check and tighten.	
	6. Damper linkage binding.	6. Check and clear.	
C. Motor Not Operating	1. Disconnect not turned on.	1. Turn to disconnect.	ide
	2. Blown fuses.	2. Check and replace.	
	3. Main to unit disconnect not on.	3. Turn on power at main.	
	4. Failed motor.	4. Check and/or replace.	
	5. Loose wiring to motor.	5. Check and tighten.	
	6. Motor overloaded.	6. Check for proper speed.	
	7. Improper supply voltage.	7. Check and correct.	
	8. Motor overheating.	8. Check firing rate of unit.	
D. Blower Not Operating	1. See Problems "A" and "C".	1. See Problems "A" and "C".	ide
	2. Broken drive belt(s).	2. Check and replace.	
	3. Bearings seized.	3. Check and replace.	
E. Burner Not Operating	1. See Problems "A" thru "D".	1. See Problems "A" thru "D".	ide
	2. Damper end switch not functioning.	2. Check and/or replace.	
	3. Failed air flow switch.	3. Check and/or replace.	
	4. Loose wiring connection at air proving.	4. Check and tighten.	
	5. No pilot.	5. See Problem "F".	
	7. Flame safeguard in lockout mode.	7. Check and reset.	
	8. High limit tripped.	8. Check and/or replace.	
	9. Too high or low gas pressure.	9. Check pressure switches and gas pressure.	
	10. Failed control transformer.	10. Check and/or replace.	
	11. Blown control transformer fuse.	11. Check and/or replace.	
	12. Failed or malfunctioning main gas valve(s).	12. Check and/or replace.	
	13. Faulty or failed freeze stat or inlet on/off stat.	13. Check and/or replace.	

	14. Failed safeguard control.	14. See vendors instructions shipped with unit.
	15. Airflow too low, low airflow proving switch is open.	15. Check for reason of insufficient airflow and correct.
	16. Airflow too high, high airflow cutoff switch is open.	16. Check for reason of excessive airflow and correct.
G. Flame Will Not Prove	1. Inadequate signal to safeguard control.	1. Check micro-Amps or Vdc from flame sensor.
	2. Insufficient gas pressure to pilot.	2. Check and adjust.
	3. Loose wires from flame sensor.	3. Check and correct.
	4. Dirty flame rod.	4. Clean and/or replace.
	5. Moisture on flame rod leads.	5. Check and dry leads. Use di-electric grease inside boot.
	6. Defective flame rod.	6. Check and/or replace.
	7. Defective flame safeguard controller.	7. Check and/or replace.
	8. Short in flame sensor leads.	8. Check and/or replace.
	9. Excessive air velocity across burner.	9. Check burner velocity and correct.
H. Erratic Temperature	1. Defective temperature selector or sensor.	1. Check and/or replace.
	2. Temperature sensor subject to poor air flow or located in drafty area.	2. Check sensor location and move if required.
	3. Discharge sensor blocked by duct insulation.	3. Check and remove blockage.
	4. Faulty amplifier or modulating valve.	4. Check and/or replace.
I. Unable to Achieve High Fire	1. Low gas supply pressure.	1. Check and adjust.
	2. Modulating controls improperly set.	2. See vendor literature shipped with unit.
	3. Faulty temperature sensor.	3. Check and/or replace.
	4. Faulty amplifier or modulating valve.	4. Check and/or replace.
J. Unable to Achieve Low Fire	1. Modulating controls improperly set.	1. See vendor literature shipped with unit.
	2. Faulty temperature sensor.	2. Check and/or replace
	3. Faulty amplifier or modulating valve.	3. Check and/or replace.
K. No Gas Flow	1. Manual gas valve(s) closed.	1. Open manual gas valve(s).
	2. See Problem "E", Items 2 thru 14.	2. See Problem "E", Items 2 thru 14.
L. Unable to Achieve Desired Discharge Temperature, or Space Temperature	1. Temperature sensors improperly set or faulty.	1. Adjust or replace.
	2. Improper gas supply pressure.	2. Check and correct.
	3. Faulty amplifier or proportioning motor.	3. See vendor literature shipped with unit.
	4. Air flow too high.	4. Check blower speed and/or burner velocity differential pressure.
	5. Burner capacity undersized.	5. Check rating plate for conformance to design specifications.

DH60 SERIES

START-UP CHECK LIST AND REPORT

IMPORTANT

1. This Start-Up Check List and Report must be used in conjunction with the Installation and Service Manual originally shipped with the unit, in addition to any other accompanying component supplier literature.
2. The use of this Start-Up Check List and Report is specifically intended for a qualified installation and service agency. All installation and service of the unit(s) to which this applies must be performed by a qualified installation and service agency.
3. After completion of start-up, make a copy of this completed form for your files as necessary and leave the original copy with the owner for future reference.

PROJECT INFORMATION

Project Name: _____

Address: _____

City, State, ZIP: _____

EQUIPMENT INFORMATION

Model #: _____

Serial #: _____

START-UP CONTRACTOR INFORMATION

Company Name: _____

Contact Name (print): _____

Contractor Address: _____

Telephone #: _____

OWNER OPERATION AND MAINTENANCE REVIEW

Owner/Owner's Rep Name: _____

Title: _____

CUSTOMER'S AUTHORIZED SIGNATURE:

I acknowledge that I have been instructed on the operation and maintenance of this equipment.

Signature: _____ Date: _____

Telephone #: _____

**THIS MANUAL IS THE PROPERTY OF THE OWNER.
PLEASE BE SURE TO LEAVE IT WITH THE OWNER WHEN YOU LEAVE THE JOB.**



Customer: _____
Sales Representative: _____
Model Number: _____
Serial Number: _____

Field Start-Up Sheet

Direct Gas Fired Equipment

Please Print

INITIAL INSPECTION

I. Installer Responsibilities

- | | | |
|---|---|---|
| 1. Remote Panel: all interconnecting wires run from remote to unit: | <input type="checkbox"/> Yes | <input type="checkbox"/> N/A |
| Temperature control interconnect wires to remote ran in: | <input type="checkbox"/> Shielded Cable | <input type="checkbox"/> Separate Conduit |
| Remote Panel Location: _____ Feet from unit (approx.) | <input type="checkbox"/> Inside Wall | <input type="checkbox"/> Outside Wall |

PLEASE NOTE: if the Remote to Main Panel Interconnect Wiring is over 200' Long, Please Consult Factory!!

- | | | |
|---|------------------------------|-----------------------------|
| 2. Gas supply connected with proper gas regulator, drip leg, etc.: | <input type="checkbox"/> Yes | <input type="checkbox"/> No |
| 3. Electrical supply connected with proper voltage/amperage, as stated on nameplate: | <input type="checkbox"/> Yes | <input type="checkbox"/> No |
| 4. All electrical connections on all components are tight, including motor connections: | <input type="checkbox"/> Yes | <input type="checkbox"/> No |
| 9. All "shipped loose" items installed properly (door switch, temp sensor, temp dial & gas valve assembly): | | |
| <input type="checkbox"/> Yes <input type="checkbox"/> No | Comments: _____ | |

II. Miscellaneous Items

- | | | | | | |
|-----------------------------|------------------------------|--|----------------------------|------------------------------|------------------------------|
| 1. Visible Physical Damage: | <input type="checkbox"/> No | <input type="checkbox"/> Yes; Explain: _____ | | | |
| 4. Hardware Tight & Secure: | <input type="checkbox"/> Yes | <input type="checkbox"/> No | 5. Damper Linkages Secure: | <input type="checkbox"/> Yes | <input type="checkbox"/> N/A |

Comments: _____

III. Fan & Motor

1. Fan Secured Tightly to Motor Shaft

2. Bushing Bolts Secure

5. Motor Manufacturer: _____

HP: _____ FLA: _____ Frame Size: _____

Comments: _____

IV. Burner Inspection

1. Spark Igniter Secured Properly

2. Flame Rod Secured Properly

3. Ignition Wire Attached at Igniter & Transformer

4. Unions Tight and Secure

Comments: _____

V. Gas Manifold & Vent Piping

Manifold Assembly Components Tight & Securely Mounted

All Fittings and Components Tight & Securely Mounted

Comments: _____

VII. Electric Service

1. Electrical Service Provided to Unit: _____ Volts _____ Phase _____ Hertz _____ Amps

2. Unit Nameplate Electrical Requirements: _____ Volts _____ Phase _____ Hertz _____ Amps

3. Main Fusing Size (if applicable): _____ Volts _____ Amps

4. Overload Relay Setting (if applicable): _____ Amps

5. Terminal Strip Wires Tight & Secure at: **Main Panel:** Yes **Remote Panel:** Yes N/A

6. Componentry and Relays Mounted Securely in Place: Yes

7. Unit has been grounded by installer at the main unit panel: Yes

Comments: _____

VIII. Gas Service (see maximum and minimum gas pressure requirements on unit rating plate)

1. Natural Gas LP Gas Service Pressure: _____ " wc - or - _____ oz. - or - _____ psig

Comments: _____

VERIFICATION OF OPERATION

NOTE: Refer to the Sequence of Operation & Wiring Diagram in the Owner's Manual for specific data on this unit.

See Factory Start-up & Test Sheet in the Unit Owner's Manual to note the unit settings prior to shipment.

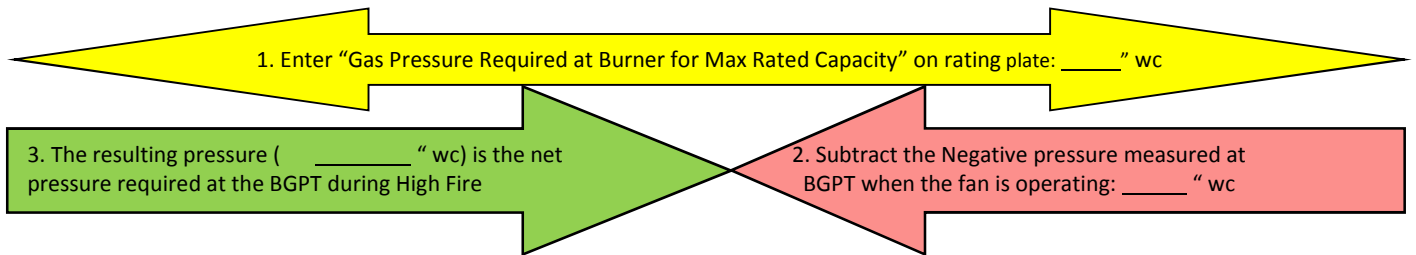
I. Fan Operation

5. Fan Rotation is in the same direction as the rotation arrow (on fan): Yes

7. Check the following:

<u>Unit Off</u>	<u>Unit On/Fan Running (burner off)</u>
A-B _____ Volts	A-B _____ Volts _____ Amps <i>Verify the motor running</i>
B-C _____ Volts	B-C _____ Volts _____ Amps <i>Amps does not exceed the</i>
A-C _____ Volts	A-C _____ Volts _____ Amps <i>motor nameplate FLA!</i>

II. Burner Operation



Forcing High Fire

Δ- Maxitrol 14 System – Disconnect wire 29

Example: 4.6" wc on rating plate – 1.2" wc burner suction (measured with just fan running = 3.4" wc net measured at the BGPT.

4. The Profile Pressure Drop is: _____ " wc (measured using high & low-pressure ports)

5. The Burner Suction Static Pressure is: _____ " wc (measured at the manifold pressure tap with unit fan on and gas off)

6. The Burner High Fire Pressure is: _____ " wc (measured as above, but with fan and gas on, and unit in forced high fire)

7. The Service Pressure with burner *in high fire* is: _____ " wc - or - _____ oz. - or - _____ psig

8. The High Temperature Limit Switch is field set to: _____ °F (maximum setting is 150°F) Yes

12. Set the burner low-fire gas pressure so there is a continuous "ribbon" of flame approximately 1" wide across face of burner.

13. Flame Relay. If a Honeywell model, it should read **1.25 to 5.0 Vdc** at terminals marked (+ -) on the flame relay face, if Fireye, it should read **4.0 to 10.0 Vdc** at terminals marked (+ -) on the flame relay face.

IV. Discharge Temperature Control Systems (Maxitrol 14 Series)

1. Modulating Regulator Valve ("MR Valve") **Voltage at Low Fire:** _____ Vdc **Voltage at High Fire:** _____ Vdc

2. Check calibration of the Discharge Air Temperature Selector. Adjust if necessary.

3. Is there evidence of temperature hunting? Yes No

**** Refer to the Maxitrol Troubleshooting Guide in the Owner's Manual for further instructions**

Comments: _____

THE ABOVE START-UP WAS PERFORMED BY:

Company Name: _____ Date: _____

Ph. Number: () _____ Fax Number: () _____

My Name (Service Tech): _____

-- MAKE A COPY FOR YOUR FILES AS NECESSARY --

The Owner Representative that I met with and discussed the unit controls and operation was:

NAME: _____ **TITLE:** _____

(please print)

CUSTOMER'S AUTHORIZED SIGNATURE

I acknowledge that I have been instructed on the operation of this unit:

Signature: _____ Date: _____ Ph. No.: _____

After Completion, Return this start-up sheet to:

AbsolutAire, Inc.

5496 N. Riverview Drive

Kalamazoo, MI 49004

Ph.: (800) 804-4000 * Fax: (269) 382-5291

Email: customerservice@absolutaire.com

Website: www.absolutaire.com

LIMITED WARRANTY

This Warranty applies to all products manufactured by AbsolutAire, Inc.

Any parts furnished by AbsolutAire that prove to be defective at the site of the original installation within 24 months from date of start-up, or 27 months from date of shipment, (whichever comes first), will be replaced or repaired at AbsolutAire's discretion at no charge to the customer. Wear items, such as V-Belts, filters, etc., are not included as covered parts under this Warranty. Defective parts must be returned to AbsolutAire at the customer's expense. Warranty replacement parts will be shipped freight prepaid from AbsolutAire via normal ground service.

The customer must notify AbsolutAire promptly in writing of any claim under this Limited Warranty. AbsolutAire will require information to ensure the equipment has been installed and maintained properly, and operated as intended within the specifications as stated on the AbsolutAire quotation and/or Order Acknowledgment. Components provided by others are not covered under this Warranty. If an AbsolutAire part fails as a result of components furnished by others, the AbsolutAire component may not be covered under this Warranty.

Reimbursement for labor for removing and/or re-installing replacement parts is included in this Warranty for a period of 30 days from field start-up or 90 days from shipment, whichever comes first. AbsolutAire is responsible to determine the amount of labor reimbursement allowed, based upon the circumstances for each installation. Labor cost reimbursement must be approved by AbsolutAire prior to the work being performed.

Disclaimer: The warranties contained in this written Limited Warranty are made in lieu of all other warranties expressed or implied, statutory or otherwise. In particular, AbsolutAire makes no warranty of merchantability for fitness for a particular purpose, unless written and signed by an officer of the Company referencing this specific disclaimer. AbsolutAire shall have no liability to customer/owner for direct, consequential or incidental damages of any kind whatsoever.

AbsolutAire, Inc.

5496 N. Riverview Drive

Kalamazoo, MI 49004

Ph.: (800) 804-4000 Fax: (269) 382-5291

www.absolutaire.com

11-01-17